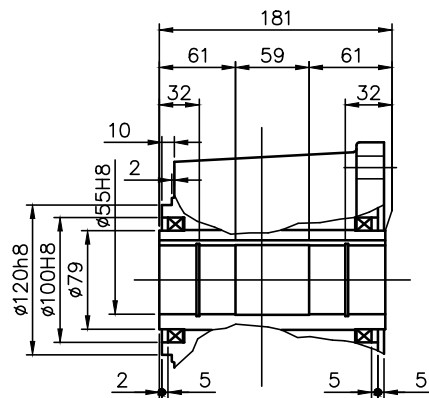
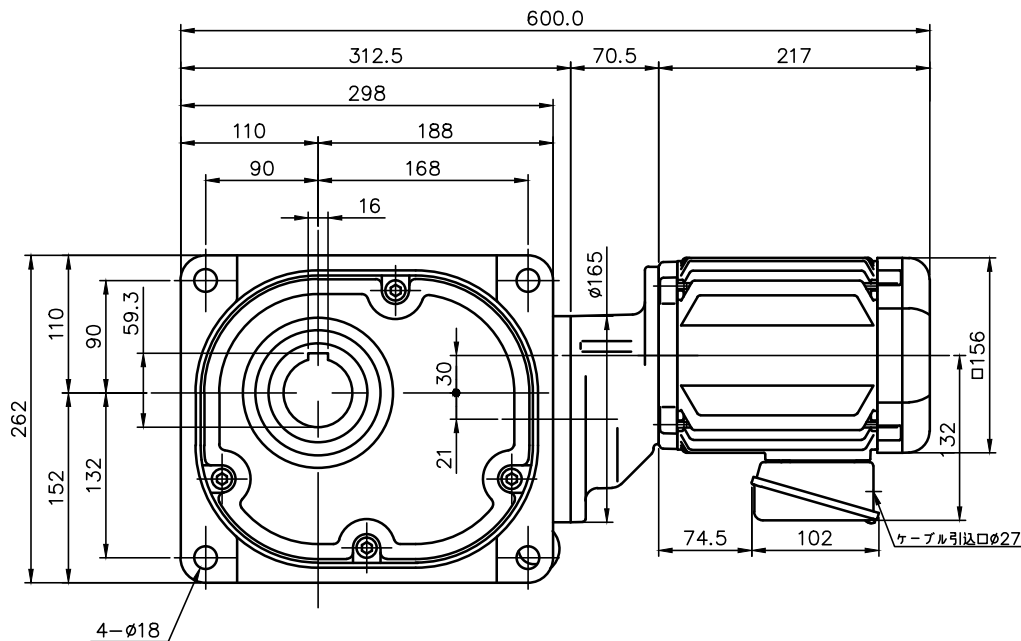
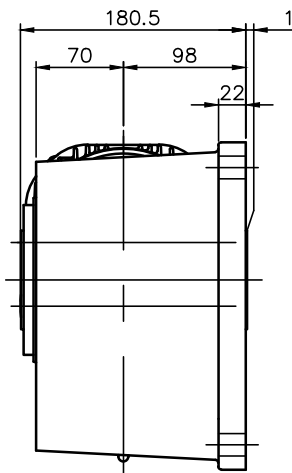


REVISIONS



出力軸部詳細



| 減速機仕様 REDUCER SPECIFICATION | | |
|-----------------------------|---|--|
| 名称 TYPE | GTR | |
| 枠番 FRAME NO. | 55 | |
| 減速比 RATIO | 300 375 450 | |
| 潤滑 LUBRICATION | グリース GREASE | |
| 塗装 PAINT COLOR | グレー (マンセル値 9B6/0.5) GREY (MANSEL CODE: 9B6/0.5) | |

| モータ仕様 MOTOR SPECIFICATION | | |
|---------------------------|-------------------------------------|--|
| 名称 TYPE | 三相誘導電動機 THREE PHASE INDUCTION MOTOR | |
| 冷却方式 COOLING METHOD | 全閉外扇形 TOTALLY ENCLOSED FAN COOLED | |
| 出力 OUTPUT | 0.75 kW | |
| 定格 RATING | S1 CONT. | |
| 耐熱クラス THERMAL CLASS | F | |
| 保護構造 IP RATING | IP44 | |

| モータ仕様 MOTOR SPECIFICATION | | | | | | | | | |
|---------------------------|------------|---------------|---------------------|-------------------|--------------------------|----------------------------|----------------|--|--|
| ※※ | 電圧 VOLTAGE | 周波数 FREQUENCY | 回転速度 ROTATION SPEED | 電流値 CURRENT VALUE | 対応規格 COMPLIANT STANDARDS | 高効率認証 EFFICIENCY STANDARDS | | | |
| NN | 200 V | 50 Hz | 1440 r/min | 3.2 A | UL/CE/CCC | < IE3 > USA/CHN/KOR | | | |
| | 200 V | 60 Hz | 1720 r/min | 3.0 A | | | | | |
| | 220 V | 60 Hz | 1740 r/min | 2.9 A | | | | | |
| WN | 380 V | 50 Hz | 1430 r/min | 1.65 A | | | | | |
| | 400 V | 50 Hz | 1440 r/min | 1.60 A | | | | | |
| | 400 V | 60 Hz | 1730 r/min | 1.50 A | | | | | |
| KN | 220 V | 60 Hz | 1750 r/min | 2.8 A | | < IE3 > USA/CHN | | | |
| | 380 V | 60 Hz | 1750 r/min | 1.6 A | | | | | |
| | 220 V | 50 Hz | 1430 r/min | 2.8 A | | | | | |
| CN | 230 V | 50 Hz | 1440 r/min | 2.7 A | | | | | |
| | 380 V | 50 Hz | 1430 r/min | 1.65 A | | | | | |
| | 208 V | 60 Hz | 1740 r/min | 2.9 A | | | | | |
| AN | 230 V | 60 Hz | 1750 r/min | 2.8 A | < IE3 > USA/CHN | | | | |
| | 460 V | 60 Hz | 1750 r/min | 1.4 A | | | | | |
| | 400 V | 50 Hz | 1440 r/min | 1.6 A | | | | | |
| EN | 415 V | 50 Hz | 1440 r/min | 1.50 A | | | < IE3 > USA | | |
| | 440 V | 50 Hz | 1450 r/min | 1.50 A | | | | | |
| | 480 V | 60 Hz | 1750 r/min | 1.35 A | | | | | |
| MA | 575 V | 60 Hz | 1750 r/min | 1.10 A | | | | | |

- 製品型式「□□□」は減速比によって入る文字数が変わります。
Number of characters on product model「□□□」, varies depending on the reduction ratio.
- 製品型式「※※」には「NN」「WN」「KN」「CN」「AN」「EN」「MA」が入ります
Replace product model「※※」 with 「NN」「WN」「KN」「CN」「AN」「EN」「MA」.
- ターミナルボックスの引出口には膜付グロメットが取り付けられています。
Membrane grammet is attached to the outlet of terminal box.

| | | | | | |
|--------------------|-------------|--------------------------|-----|------------|------|
| TITLE | | FS55N□□□-MD08T* * TN | | | |
| | | 外形寸法図 DIMENSION OF MODEL | | | |
| DRAWING NO. | | FS55N-MD08TTN | | | |
| USER | | | | | |
| NOTICE | | | | | |
| APPROVE | H.Hayashi | SCALE | 1:6 | UNIT | DATE |
| CHECK | M.Iijima | | | | |
| DESIGN | A.Kobayashi | | | | |
| | | UNIT | | DATE | |
| | | mm | | 2019.02.08 | |
| NISSEI CORPORATION | | | | | |