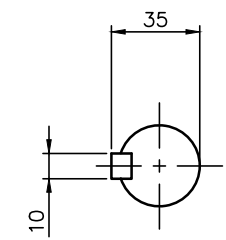
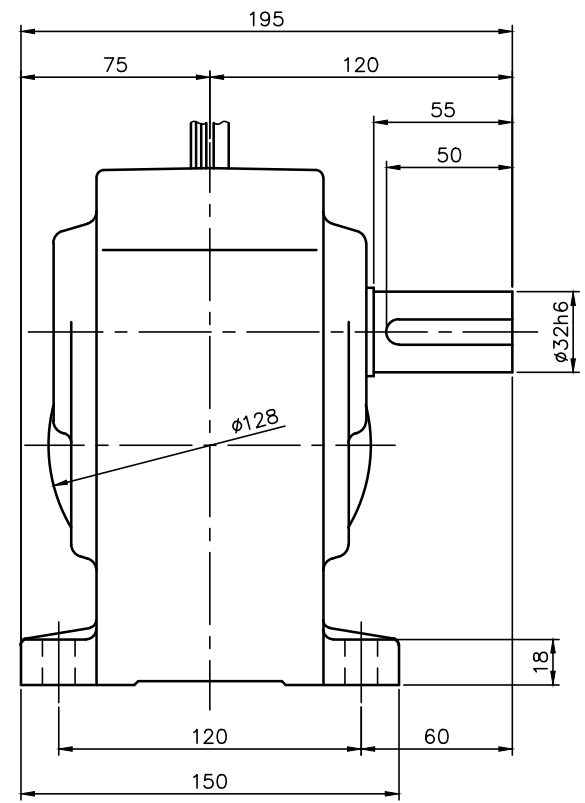
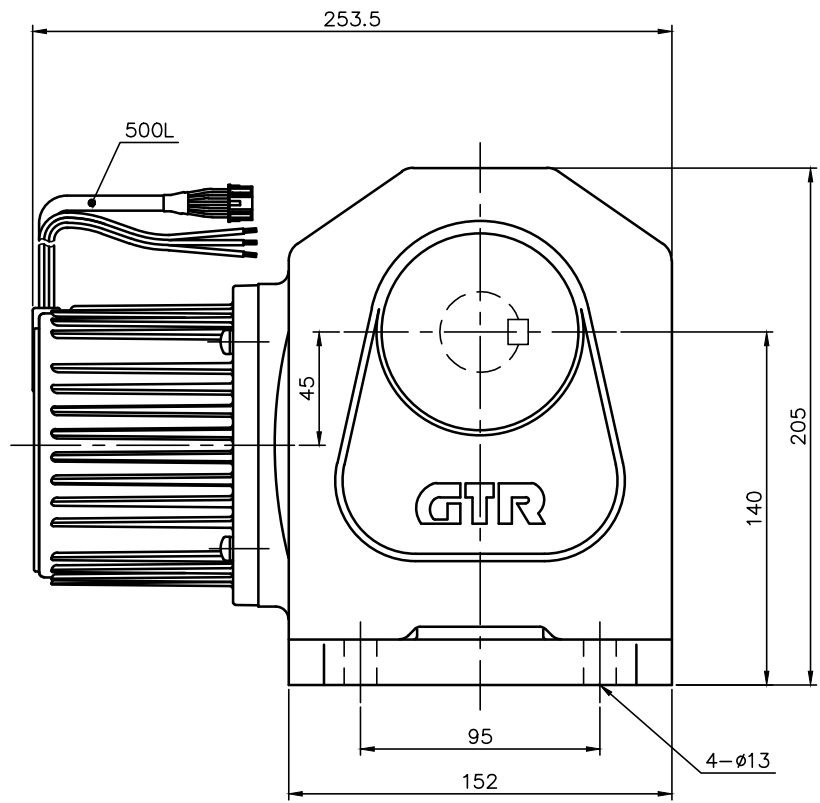


REVISIONS



| モータ仕様 MOTOR SPECIFICATION | |
|---------------------------------|---|
| 名称 TYPE | バッテリー電源タイプブラシレスDCモータ BRUSHLESS VARIABLE-SPEED GEARMOTORS |
| 冷却方式 COOLING METHOD | 全閉自冷形 TOTALLY ENCLOSED NON-VENTILATED |
| 出力 OUT PUT | 400W |
| 電圧 VOLTAGE | DC 24V (L2) DC 48V (L4) |
| 回転速度 ROTATION SPEED | 2500 r/min |
| 定格 RATING | S1 CONT. |
| 耐熱クラス INSULATION CLASSIFICATION | E種 CLASS E |

| 減速機仕様 REDUCER SPECIFICATION | |
|-----------------------------|--|
| 名称 TYPE | GTR AR |
| 枠番 FORM | 32L |
| 減速比 REDUCTION RATIO | 1/80 1/100 1/120 1/60 1/200 1/240 |
| 潤滑 LUBRICATION | グリース GREASE |
| 塗装 PAINT COLOR | グレー (マンセル値 9B6/0.5) GREY (MANSEL CODE: 9B6/0.5) |

1. 出力軸キー寸法は JIS B 1301-1996 平行キーに依ります。
KEY DIMENSIONS AND TOLERANCES FOR OUTPUT SHAFTS ARE SPECIFIED BY JIS B 1301-1996

| | | | | | |
|-------------|---------------|-------|-----|---------------------------|--------------------|
| TITLE | | | | VHLC32L-80~240N400L2A/L4A | |
| | | | | 外形寸法図 DIMENSION OF MODEL | |
| DRAWING NO. | | | | VHLC32L-N400A | |
| USER | | | | | |
| NOTICE | | | | | |
| APPROVE | H.Hayashi | SCALE | 1:3 | UNIT mm | DATE 2017.10.02 |
| CHECK | T.Wakabayashi | | | | |
| DESIGN | K.Nishikawa | | | | |
| | | | | NISSEI CORPORATION | |